

# **SYLLABUS**

**Session: 2022 – 2023**

**Class – VI**

# INDEX

(Index are clickable, click on the subject to go directly to that page)

<a href="#">English.....</a>
<a href="#">Hindi.....</a>
<a href="#">Maths.....</a>
<a href="#">Science.....</a>
<a href="#">Social Science.....</a>
<a href="#">Computer.....</a>
<a href="#">GK .....</a>
<a href="#">Reasoning.....</a>
<a href="#">Sanskrit.....</a>
<a href="#">Art .....</a>

## **SUBJECT – ENGLISH**

### **Prescribed Books:**

- 1. Honeysuckle Textbook (NCERT) Class-VI**
- 2. A Pact With The Sun Supplementary Reader (NCERT) Class-VI**
- 3. Elementary English Grammar and Composition (N.K. Aggarwala) Class-6**
- 4. Life Skills and Value Education-6**(Provided by the school, available on the school app **AMPS PARENTS**)

### **Term – 1**

#### **Course for Periodic Test-1**

#### **1- Honeysuckle Textbook-6**

1. Who Did Patrick's Homework?  
Poem: A House, A Home
2. How the Dog Found Himself a New Master!  
Poem: The Kite
3. Taro's Reward

#### **2 - A Pact With The Sun Supplementary Reader-6**

1. A Tale of Two Birds
2. The Friendly Mongoose

#### **3 - Elementary English Grammar and Composition-6**

1. The Sentence
2. Nouns: Kinds of Nouns
3. Pronouns: Kinds of Pronouns
4. Adjectives: Kinds of Adjectives
6. Adverbs: Kinds of Adverbs
7. Preposition

#### **4- Life Skills and Value Education-6(Reading Section)**

Unit -1 Self-Awareness

Unit - 2 Respect your body

**Note-** One Case study based unseen passage related to the units of Life Skills and Value Education-6 will be tested in Half Yearly Examination only.

## **Writing Techniques –**

1. Application Writing (100-120 words)
2. Diary Entry (100-120 words)

## **Course for Half-Yearly Exams**

### **1- Honeysuckle Textbook-6**

Poem: The Quarrel

4. An Indian-American Woman in Space: Kalpana Chawla
5. A Different Kind of School

### **+ All the poems and lessons from Periodic Test-1**

1. Who Did Patrick's Homework?

Poem: A House, A Home

2. How the Dog Found Himself a New Master!

Poem: The Kite

3. Taro's Reward

### **2- A Pact With The Sun Supplementary Reader-6**

3. The Shepherd's Treasure
4. The Old-Clock Shop

### **+ All the lessons of Periodic Test-1**

1. A Tale of Two Birds
2. The Friendly Mongoose

### **3 - Elementary English Grammar and Composition-6**

8. Conjunctions: Kinds of Conjunctions
10. Nouns: Number
11. Nouns: Gender
14. Comparison of Adjectives
15. Use of Articles
1. The Sentence
2. Nouns: Kinds of Nouns
3. Pronouns: Kinds of Pronouns
4. Adjectives: Kinds of Adjectives
6. Adverbs: Kinds of Adverbs
7. Prepositions

#### **4 - Life Skills and Value Education-6**

Unit -3 7-step safety rule

Unit - 4 Critical thinking

#### **+ Both the Units of Periodic Test-1**

Unit -1 Self-Awareness

Unit -2 Respect your body

**Note-** One Case study based unseen passage related to the units of **Life Skills and Value Education-6** will be tested in Half Yearly Examination only.

#### **Writing Techniques –**

1. Informal Letter (100-120 words)
2. Application (100-120 words)
3. Paragraph Writing (100-120 words)

#### **Term-2**

#### **Course for Periodic Test-2**

#### **1- Honeysuckle Textbook-6**

Poem: Beauty

Poem: Where Do All the Teachers Go?

7. Fair play

8. A Game of Chance

#### **2- A Pact With The Sun Supplementary Reader-6**

5. Tansen

6. The Monkey and the Crocodile

#### **3- Elementary English Grammar and Composition-6**

16. Tenses

17. The Uses Of The Tenses: Simple Present Tense

18. Simple Past Tense

19. Simple Future Tense

20. The Present, Past and Future Continuous Tenses

21. The 'Perfect' Tenses

#### **4 - Life Skills and Value Education-6(Reading Section)**

Unit -5 Body Shaming

Unit - 6 Bullying

**Note-** One Case study based unseen passage related to the units of Life Skills and Value Education-6 will be tested in the Annual Examination only.

**Writing Techniques –**

1. Formal Letter (100-120 words)
2. Story Writing (100-120 words)

**Course for Annual Exams**

**1- Honeysuckle Textbook – 6**

Poem: The Wonderful Words

9. Desert Animals

**+ All poems and lessons from Periodic Test – 2**

Poem: Where Do All the Teachers Go?

Poem: Beauty

7. Fair play

8. A Game of Chance

**2 A Pact With The Sun Supplementary Reader – 6**

7. The Wonder Called Sleep

8. A Pact with the Sun

**+ All lessons and poems from Periodic Test – 2**

5. Tansen

6. The Monkey and the Crocodile

**3 Elementary English Grammar and Composition – 6**

22. Active and Passive Voice

23. Agreement of the Verb with the Subject

26. Punctuation And Capital Letters

27. Direct and Indirect Speech

28. Words often confused

**+ All Grammar chapters of Term – 1 and Periodic Test – 2**

1. The Sentence

2. Nouns: Kinds of Nouns

3. Pronouns: Kinds of Pronouns

4. Adjectives: Kinds of Adjectives
6. Adverbs: Kinds of Adverbs
7. Prepositions
8. Conjunctions: Kinds of Conjunctions
10. Nouns: Number
11. Nouns: Gender
14. Comparison of Adjectives
15. Use of Articles
16. Tenses
17. The Uses Of The Tenses: Simple Present Tense
18. Simple Past Tense
19. Simple Future Tense
20. The Present, Past and Future Continuous Tenses
21. The 'Perfect' Tenses

#### **4 -Life Skills and Value Education-6(Reading Section)**

Unit 7 - Teaching life skills through Meditation

Unit 8 – Resilience and Problem-Solving

#### **+ Both the Units of Periodic Test-2**

Unit -5 Body Shaming

Unit - 6 Bullying

**Note-** One Case study based unseen passage related to the units of Life Skills and Value Education-6 will be tested in Annual Examination only.

#### **Writing Techniques –**

1. Formal letter/Informal letter (100-120 words)
2. Diary Entry/Paragraph Writing (100-120 words)
3. Story writing (100-120 words)

#### **The Deleted Portion in Literature:-**

##### **Honeysuckle Textbook – 6**

Chapters:

6. Who I Am

10. The Banyan Tree

Poems:

Vocation

What if

**A Pact With The Sun Supplementary Reader – 6**

9. What Happened to the Reptiles
10. A Strange Wrestling Match

**The Deleted Portion in Grammar:-**

**Elementary English Grammar and Composition – 6**

1. The Sentence (Ex 9. & 10)
2. Nouns: Kinds of Nouns (F)
3. Pronouns: Kinds of Pronouns (Ex 9)
5. Verbs: Kinds of Verbs
9. Interjections
12. Nouns: Case
13. Pronouns: Number, Gender and Case
22. Active and Passive Voice (Ex 7)
24. Comparison of adverbs
25. More About Prepositions
27. Direct and Indirect Speech (C&D)
29. Synonyms and Antonyms
30. Idioms and Verbal Phrases

**QUESTION PAPER PATTERN FOR PERIODIC TEST – 1 AND PERIODIC TEST – 2**

**Time: 2hrs**

**MM: 40**

**Section – A (Reading)**

**10 marks**

Two Unseen Comprehension passages, based on the following pattern:

**UNSEEN PASSAGE-1(300-350 words) 5 marks**

(i) To answer the questions based on the given passage in the form of:

- Questions-Answers
- Complete the sentences/Fill-ups
- True/False

**UNSEEN PASSAGE-2(300-350 words)**

**5 marks**

(i) To answer the Multiple Choice Questions (MCQs) based on the given passage

**3×1= 3 marks**



(ii) Finding word from the passage: a synonym or antonym of the given word/phrase 2×1= 2 marks

**Section – B (Writing)**

**8 marks**

Two Writing Techniques will be given.(100-120 words) 2 × 4= 8 marks

**Section – C(Grammar)**

**10 marks**

Various Questions based on the Grammar syllabus will be given.

**Section – D (Literature)**

**12 marks**

(i) To read the given extract from the given poems/lessons (Honeysuckle) and answer the questions. 3×1= 3 marks

(ii) To answer two out of four questions in about 30-40 words each.

2×2= 4 marks

(iii) Word – meanings(Four out of five)

4×1/2=2 marks

(iv) Vocabulary

6×1/2=3 marks

**QUESTION PAPER PATTERN FOR HALF-YEARLY EXAMS AND ANNUAL EXAMS**

**Time: 3 hrs.**

**M.M: 80**

**Section – A (Reading)**

**20 Marks**

Two Unseen Comprehension passages, based on the following pattern:

**UNSEEN PASSAGE-1(300-350 words)**

One CASE STUDYbased unseen passage related to the units of Life Skills and Value Education-6 will be given.10 marks

(i) To answer the questions based on the given passage in the form of:

- Question-Answers
- Complete the sentences/fill-ups
- True/False

**UNSEEN PASSAGE-2(300-350 words)**

**10 marks**

(i) To answer the Multiple Choice Questions (MCQs) based on the given passage. 6 marks

(ii) True/False, Fill ups, Vocabulary

4 marks

**Section– B (Writing)**

**12 marks**

Three Writing Techniques will be given.(100-120 words) 3×4=12marks

**Section - C (Grammar)****18 marks**

Various Questions based on the Grammar Syllabus will be given.

**Section – D (Literature)****30 marks**

(i) To read two extracts from the given lessons /poems of Honeysuckle: Textbook and answer the questions based on the given extracts.

2×3=6 marks

(ii) To answer five out of seven questions in about 30-40 words each

5×2=10 marks

(iii) To answer two out of four questions in about 60 – 80 words each.

2×3= 6 marks

(iv) To answer one out of two questions in about 100-120 words

1×4=4 marks

(v) Word – Meanings (4 out of 5)

4×1/2=2 marks

(vi) Vocabulary

4×1/2=2 marks

**Note: -**

- Question-Answers and word meanings will be given from the lessons and poems of Honeysuckle: Textbook And A Pact with the Sun-6 (Supplementary Reader)
- Vocabulary and Seen Comprehensions will be given from Honeysuckle-6 (Textbook).

**SUBJECT ENRICHMENT****TERM-I (20 marks)**

1. Assessment of Speaking and Listening Skills (ASL) 5+5= 10 marks
2. Prepare a chart by providing descriptive information about Desert Animals.

OR

Write a paragraph on Tansen.

5 marks

3. Dictation

5 marks

## TERM-II

**(20 marks)**

1. Assessment of Speaking and Listening Skills (ASL) 5+5= marks
2. Prepare a chart on any one topic: 5 marks
  - Anyone part of speech.
  - Provide descriptive information about Trees.
3. Dictation 5 marks

### NOTE:

- Regular practice for ASL will be given in the class.
- Prior information will be given for the Assessment of Speaking and Listening Skills Exam.
- ASL will be conducted in both Terms.
- Dictation tests will be taken once a week in the class for practice.
- Besides this, in the last week of every month, one dictation exam of 10 marks will be conducted in each term(Term-1 & 2 respectively)
- The average marks of the best two Dictation exams will be included in the Subject Enrichment.

### RUBRICS:

#### ASL:

1. Listening Skill Assessment - 5 marks
2. Speaking Skill Assessment:
  - Content 2marks
  - Expression and Language 2marks
  - Fluency 1mark
  - Total - 5 marks

#### Project – 5 marks

- Content 2 marks
- Neatness 1mark
- Presentation 1mark
- Originality 1mark
- Total 5 marks

विषय - हिन्दी

प्रस्तावित पुस्तकें -

1. मधुप हिंदी पाठशाला - 6 - डॉ. प्रदीप कुमार जैन
2. व्याकरण वाटिका - 6 - डॉ. अनुराधा

Term- 1

अर्द्धवार्षिक- पूर्व - परीक्षा (Periodic Test-1) का पाठ्यक्रम

खंड-क

अपठित गद्यांश पर आधारित प्रश्न

खंड- ख

व्याकरण -

1. भाषा, लिपि और व्याकरण
2. शब्द निर्माण - उपसर्ग - प्रत्यय
3. शब्द निर्माण - लिंग
4. शब्द निर्माण - वचन

खंड -ग

साहित्य -

- पाठ 1- जीवन (कविता)  
पाठ 2- तीर्थ तिलोनिया  
पाठ 3- अकलमंद बिल्ली

खंडघ

लेखन- पत्र (औपचारिक/ अनौपचारिक)

अर्द्धवार्षिक - परीक्षा का पाठ्यक्रम

खंड -क

अपठित गद्यांश /पद्यांश पर आधारित प्रश्न

खंड- ख

## व्याकरण -

1-शब्द विचार - तत्सम तद्भव

2-शब्द भंडार - विलोम शब्द (प्रथम 20)

3-शब्द भंडार - पर्यायवाची (प्रथम 20)

+ अर्द्धवार्षिक- पूर्व - परीक्षा के व्याकरण भाग के निम्नलिखित उपविषय भी पाठ्यक्रम में सम्मिलित किये गए हैं।

4-भाषा लिपि और व्याकरण

5-शब्द निर्माण- उपसर्ग- प्रत्यय

6-शब्द निर्माण- लिंग

7-शब्द निर्माण- वचन

## खंड -ग

### साहित्य-

पाठ 4- मैत्री- गान

पाठ 5- वह देश कौन - सा है (कविता)

पाठ 6- बातूनी

पाठ 7- राजा

पाठ 8- लाल जूता

+ अर्द्धवार्षिक- पूर्व - परीक्षा के निम्नलिखित पाठ भी पाठ्यक्रम में सम्मिलित किये गए हैं।

पाठ 1-जीवन (कविता)

पाठ 2-तीर्थ तिलोनिया

पाठ 3- अकलमंद बिल्ली

## खंड -घ

### लेखन

1. लघु कथा लेखन

2. औपचारिक/अनौपचारिक पत्र

3. अनुच्छेद लेखन (कक्षा के स्तरानुसार - विकल्प सहित)

निर्देश -मधुप वव्याकरण वाटिका पुस्तकों में संलग्न गतिविधि पुस्तिकाओं को अंक निर्धारण हेतु पाठ्यक्रम में सम्मिलित किया गया है।

### Term - 2

### वार्षिक - पूर्व परीक्षा (Periodic Test-2) का पाठ्यक्रम

#### खंड- क

अपठित गद्यांश पर आधारित प्रश्न

#### खंड- ख

#### व्याकरण -

1. सर्वनाम (परिभाषा, पहचानना, छाँटना व भरना)
2. शब्द भंडार - वाक्यांशों के लिए एक शब्द
3. शब्द भंडार - अनेकार्थी शब्द
4. शब्द भंडार - समरूपी भिन्नार्थक शब्द (प्रथम 15)

#### खंड -ग

#### साहित्य -

पाठ 12- मुकदमा : हवा - पानी

पाठ 13- होशियार

पाठ 14- बारहमासा (कविता)

पाठ 15- और वे फकीर बन गए

#### खंड- घ

लेखन -डायरी लेखन

### वार्षिक - परीक्षा का पाठ्यक्रम

#### खंड- क

अपठित गद्यांश / पद्यांश पर आधारित प्रश्न

#### खंड- ख

## व्याकरण

1. विराम चिह्न
2. मुहावरे (प्रथम 20)  
+अर्द्धवार्षिक पूर्व, अर्द्धवार्षिक एवं वार्षिक पूर्व परीक्षा के व्याकरण भाग के निम्नलिखित उपविषय भी पाठ्यक्रम में सम्मिलित किये गए हैं।
3. भाषा, लिपि और व्याकरण
4. शब्द निर्माण - उपसर्ग - प्रत्यय
5. शब्द निर्माण - लिंग
6. शब्द निर्माण - वचन
7. शब्द विचार - तत्सम-तद्भव
8. शब्द भंडार - विलोम शब्द (प्रथम 20)
9. शब्द भंडार - पर्यायवाची (प्रथम 20)
10. सर्वनाम (परिभाषा, पहचानना, छाँटना व भरना)
11. शब्द भंडार - वाक्यांशों के लिए एक शब्द
12. शब्द भंडार - अनेकार्थी शब्द
13. शब्द भंडार - समरूपी भिन्नार्थक शब्द (प्रथम 15)

## खंड -ग

### साहित्य-

पाठ 16- खाने की इच्छा

पाठ 17- दर्यानूर

पाठ 18- कृष्ण की चेतावनी

+वार्षिक-पूर्व - परीक्षा के निम्नलिखित पाठ भी पाठ्यक्रम में सम्मिलित किये गए हैं।

पाठ 12- मुकदमा : हवा -पानी

पाठ 13- होशियार

पाठ 14- बारहमासा (कविता)

पाठ 15- और वे फकीर बन गए

**खंड -घ**

**लेखन**

1. लघु कथा
2. डायरी लेखन
3. पत्र (औपचारिक /अनौपचारिक)
4. अनुच्छेद लेखन (कक्षा के स्तरानुसार - विकल्प सहित)

**निर्देश** -मधुप वव्याकरण वाटिका पुस्तकों में संलग्न गतिविधि पुस्तिकाओं को अंक निर्धारण हेतु पाठ्यक्रम में सम्मिलित किया गया है।

**अर्द्धवार्षिक पूर्व परीक्षा के प्रश्न पत्र का प्रारूप**

**समय -2 घण्टे**

**पूर्णांक- 40**

**प्रश्नों की संख्या x अंक**

**खण्ड-क**

**अपठित**

**5 अंक**

1 गद्यांश के प्रश्न

बहुविकल्पीय प्रश्न

2 x1 = 2

व्याख्यात्मक प्रश्न

3 x1 = 3

**खण्ड-ख**

**व्याकरण**

**15 अंक**

2 भाषा , लिपि और व्याकरण

4 x1 = 4

3 शब्द निर्माण – उपसर्ग-प्रत्यय

4 x1 = 4

4 शब्द निर्माण - लिंग

4 x 1 = 4

5 शब्द निर्माण - वचन

3 x 1 = 3

**खण्ड-ग**



**साहित्य****15 अंक**

6 गद्यांश/पद्यांश पर आधारित प्रश्न

बहुविकल्पीय प्रश्न

$1 \times 1 = 1$

व्याख्यात्मक प्रश्न

$2 \times 1 = 2$

}

7. गद्य/पद्य पाठों के चार में से तीन प्रश्न (लगभग 40 से 60 शब्दों में)  $3 \times 2 = 6$ 8. शब्दार्थ एवं वाक्य प्रयोग (केवल गद्य पाठों से विकल्प सहित)  $2 \times 1.5 = 3$ 9. किसने-किससे कहा ?  $2 \times 1 = 2$ 10. नया शब्द बताइए  $2 \times \frac{1}{2} = 1$ **खण्ड-घ**

12. लेखन-पत्र (औपचारिक /अनौपचारिक)

**5****अर्द्धवार्षिक परीक्षा के प्रश्न पत्र का प्रारूप****समय - 3 घण्टे****पूर्णांक- 80****खण्ड-क****अपठित****प्रश्नों की संख्या x अंक**

1 गद्यांश /पद्यांश पर आधारित प्रश्न

**10 अंक**

बहुविकल्पीय प्रश्न

$2 \times 1 = 2$

व्याख्यात्मक प्रश्न

$4 \times 2 = 8$

}

**खण्ड-ख****व्याकरण****30 अंक**

2 भाषा, लिपि और व्याकरण

$4 \times 1 = 4$

3 तत्सम-तद्भवशब्द

$4 \times 1 = 4$

4 पर्यायवाची शब्द (प्रथम 20) (प्रति शब्द दो पर्यायवाची)

$4 \times 1 = 4$

5. शब्द निर्माण - उपसर्ग -प्रत्यय

$4 \times 1 = 4$

6. शब्द निर्माण - वचन

$4 \times 1 = 4$

7. शब्द निर्माण -लिंग

$5 \times 1 = 5$

8. शब्द भंडार - विलोम शब्द (प्रथम 20)

$5 \times 1 = 5$

**खण्ड-ग****साहित्य****25 अंक**

9. गद्यांश पर आधारित प्रश्नोत्तर

बहुविकल्पीय प्रश्न

$2 \times 1 = 2$

व्याख्यात्मक प्रश्न

$2 \times 1 = 2$

}

10. पद्यांश पर आधारित प्रश्नोत्तर

$4 \times 1 = 4$

11. गद्य/पद्य पाठों के प्रश्न पाँच में से चार प्रश्न

(लगभग 40 से 60 शब्दों में)

$4 \times 2 = 8$

12. शब्दार्थ एवं वाक्य प्रयोग (केवल गद्य पाठों से) (विकल्प सहित)  $2 \times 2 = 4$ 

13. मूल्यपरकप्रश्न/ पाठों में से किसी एक पात्र का चरित्र-चित्रण/

किसी पाठ का सारांश

$1 \times 4 = 4$

(प्रत्येक विकल्प सहित लगभग 60 से 80 शब्दों में)

14. नया शब्द बनाइए

$2 \times \frac{1}{2} = 1$

**खण्ड-घ****लेखन****15 अंक**

15. अनुच्छेद लेखन (कक्षा के स्तरानुसार – विकल्प सहित)

5

16. लघु कथा लेखन

5

17. पत्र (औपचारिक /अनौपचारिक)

5

वार्षिक पूर्व परीक्षा के प्रश्न पत्र का प्रारूप

समय -2 घण्टे

पूर्णांक- 40

प्रश्नों की संख्या xअंक

खण्ड-क

अपठित

5 अंक

1. अपठित गद्यांश पर आधारित प्रश्न

बहुविकल्पीय प्रश्न

$$2 \times 1 = 2$$

व्याख्यात्मक प्रश्न

$$3 \times 1 = 3$$

}

खण्ड-ख

व्याकरण

15 अंक

2.सर्वनाम

$$4 \times 1 = 4$$

3. वाक्यांशों के लिए एक शब्द

$$4 \times 1 = 4$$

4. अनेकार्थी शब्द

$$4 \times 1 = 4$$

5. मुहावरे (प्रथम 20)

$$3 \times 1 = 3$$

खण्ड-ग

साहित्य

15 अंक

साहित्य भाग के प्रश्न पत्र का प्रारूप अर्द्धवार्षिक पूर्व परीक्षा की भाँति रहेगा।

खण्ड-घ

12. लेखन- डायरी लेखन

5

वार्षिक परीक्षा के प्रश्न पत्र का प्रारूप

समय - 3 घण्टे

पूर्णांक- 80

खण्ड-क

प्रश्नों की संख्या x अंक

अपठित

10 अंक

1 गद्यांश/पद्यांश पर आधारित प्रश्न

बहुविकल्पीय प्रश्न

$2 \times 1 = 2$

व्याख्यात्मक प्रश्न

$4 \times 2 = 8$

### खण्ड-ख

#### व्याकरण

30 अंक

2 विराम चिह्न

$3 \times 1 = 3$

3 मुहावरे (प्रथम 20)

$3 \times 1 = 3$

4 भाषा, लिपि और व्याकरण / सर्वनाम

$4 \times 1 = 4$

5 लिंग/समरूपी भिन्नार्थक शब्द

$4 \times 1 = 4$

6 वचन/अनेकार्थी शब्द

$4 \times 1 = 4$

7 उपसर्ग-प्रत्यय/तत्सम-तद्भव शब्द

$4 \times 1 = 4$

8 विलोम/पर्यायवाची शब्द (प्रतिशब्द दो पर्यायवाची)

$4 \times 1 = 4$

9 वाक्यांशों के लिए एक शब्द

$4 \times 1 = 4$

### खण्ड-ग

25 अंक

#### साहित्य

साहित्य भाग के प्रश्न पत्र का प्रारूप अर्द्धवार्षिक परीक्षा की भाँति रहेगा।

### खण्ड-घ

15 अंक

#### लेखन

16. अनुच्छेद लेखन (कक्षा के स्तरानुसार – विकल्प सहित)

5

17. पत्र (औपचारिक / अनौपचारिक)

5

18. लघुकथा / डायरी लेखन

5

## विषय संवर्धन (Subject Enrichment)

(Term-1 & Term-2)

पूर्णांक – 20

(1) परियोजना	-	5 अंक
(2) वाचन कौशल परीक्षा	-	5 अंक
(3) श्रवण कौशल परीक्षा	-	5 अंक
(4) श्रुतलेख	-	5 अंक

20 अंक

### अर्द्धवार्षिक परीक्षा (Term-1)

#### (1) परियोजना हेतु चयनित विषय

- विभिन्न ऋतुओं में भारत के पाँच राज्यों में मनाए जाने वाले त्योहारों की सूची तैयार कीजिए।

#### अथवा

- महात्मा गांधी के 'स्वदेशी आंदोलन' के विषय में जानकारी एकत्र कर 100 शब्दों में एक अनुच्छेद लिखिए।  
(उपरोक्त कार्य A4 ड्राइंग शीट पर करना है।)

#### उपरोक्त विषयों के आकलन हेतु मूल्यांकन बिन्दु एवं अंक योजना

- विषय वस्तु - 2 अंक
- सुलेख एवं वर्तनी-शुद्धिकरण - 2 अंक
- मौलिकता - 1 अंक

#### (2) वाचन कौशल परीक्षा

- वाचन (बोलना)-भाषण, सस्वर कविता - पाठ, कहानी अथवा घटना सुनाना आदि।
- मूल्यांकन बिन्दु एवं अंक योजना
- विषय वस्तु - 2 अंक
- आरोह, अवरोह - 2 अंक

- उच्चारण - 1 अंक

### (3) श्रवण कौशल परीक्षा

- परीक्षक किसी प्रासंगिक विषय पर एक अनुच्छेद का स्पष्ट वाचन करेगा तत्पश्चात परीक्षार्थी उक्त अनुच्छेद पर आधारित प्रश्नों के उत्तर लिखित रूप में देंगे।

### (4) श्रुतलेख

#### वार्षिक परीक्षा (Term-2)

#### परियोजना हेतु चयनित विषय

- जल संचयन के विभिन्न उपायों के बारे में जानकारी एकत्र करके लिखिए।

#### अथवा

- विश्व के सात आश्चर्यों के नाम लिखकर उनकी तस्वीरें एकत्र करके ड्राइंग शीट पर लगाइए।

(उपरोक्त कार्य A4 ड्राइंग शीट पर करना है।)

#### निर्देश -

- प्रत्येक पाठ समाप्त होने पर उसी पाठ में से एक श्रुतलेख अभ्यास कराया जाएगा।
- प्रत्येक माह के अंत में 10 अंक की एक श्रुतलेख परीक्षा होगी जिसमें 20 कठिन शब्द दिए जाएंगे।
- उक्त श्रुतलेख परीक्षाओं में से किन्हीं दो, जिनमें विद्यार्थी ने सर्वाधिक अंक प्राप्त किए हो, के अंक दोनों सत्रों में होने वाली विषय संवर्धन परीक्षा में सम्मिलित किए जाएंगे।
- उत्तर पुस्तिकाओं का रख-रखाव तथा पुस्तकों में संलग्न गतिविधि पुस्तिकाएँ आंतरिक मूल्यांकन का अंश होंगी।
- वार्षिक परीक्षा के लिए चयनित विषयों (परियोजना), वाचन कौशल, श्रवण कौशल एवं श्रुतलेख परीक्षा के मूल्यांकन बिंदु एवं अंक योजना अर्द्धवार्षिक परीक्षा के समान ही होगी।

## **SUBJECT- MATHS**

**Prescribed Book:** SMART MATHS - 6

S. Chand School

By: Anita Sharma and Dr K P Chinda

### **TERM – I**

#### **Course for Periodic Test – I**

Ch-1 Knowing our Numbers

Ch-2 Whole Numbers

Ch-3 Playing with Numbers

#### **Course for Half Yearly Examination**

Ch-4 Basic Geometrical Ideas

Ch-6 Three-Dimensional Shapes

Ch-8 Fractions

Ch-9 Decimals

Ch-12 Algebra

#### **+ All the chapters of PT- I mentioned below**

Ch- 1 Knowing our Numbers

Ch- 2 Whole Numbers

Ch- 3 Playing with Numbers

### **TERM – II**

#### **Course for Periodic Test – II**

Ch-5 Understanding Elementary Shapes

Ch-7 Integers

Ch-10 Data Handling

Ch-13 Ratio and Proportion

#### **Course for Annual Examination**

Ch-11 Mensuration

Ch-14 Symmetry

Ch-15 Practical Geometry

Ch-9 Decimals (From Term - I )

#### **+ All the chapters of PT-II mentioned below**

- Ch- 5 Understanding Elementary Shapes
- Ch- 7 Integers
- Ch- 10 Data Handling
- Ch- 13 Ratio and Proportion

**QUESTION PAPER PATTERN FOR PERIODIC TEST - I  
AND  
PERIODIC TEST – II**

Time – 2 hours

M.M: 40

**Question paper consists of four sections:**

Section A – Q1 to Q4 are of 1 mark each	$4 \times 1 = 04$
Section B – Q5 to Q8 are of 2 marks each	$4 \times 2 = 08$
Section C – Q9 to Q12 are of 3 marks each	$4 \times 3 = 12$
Section D – Q13 to Q16 are of 4 marks each	$4 \times 4 = 16$
<b>Total</b>	<b>40</b>

- Question No. 16 is a case study-based question. It has two case-based sub-parts of 2 mark each.

**QUESTION PAPER PATTERN FOR HALF YEARLY AND ANNUAL EXAMS**

Time – 3 hours

M.M: 80

**Question paper consists of four sections:**

Section A – Q1 to Q6 are of 1 mark each	$6 \times 1 = 06$
Section B – Q7 to Q12 are of 2 marks each	$6 \times 2 = 12$
Section C – Q13 to Q22 are of 3 marks each	$10 \times 3 = 30$
Section D – Q23 to Q30 are of 4 marks each	$8 \times 4 = 32$
<b>Total</b>	<b>80</b>

- Question No. 29 & 30 are case study-based questions.
- Each case study has two case-based sub-parts of 2 marks each.

**Deleted Portion:-**

- ‘Let us Assess’ and ‘Work in Mind’ given after every chapter are deleted.



**NOTE:-**

- Questions to be asked from '**Challenge**' given after every chapter-  
1 Question of 2 Marks in Periodic Test - I and Periodic Test - II.  
each.  
1 Question of 4 Marks in Half Yearly and Annual Examination  
each.

**SUBJECT ENRICHMENT****TERM - I****M.M=20**

Show the following parts of a circle by paper cutting and folding method.

(a) Centre (b) Radius (c) Diameter (d) Chord (e) Segment

**TERM - II****M.M =20**

Collect the data from 20 students of your class regarding their favourite sports and represent the data in the form of Bar Graph.

Note: Other details of the activities will be provided to the students during their classes.

**Example of Case Study Based Question**

The theme for World Children's Day 2021 was to help children to recover from interruptions and learning losses experienced through the pandemic in the last two years. On this occasion our school organised different sports

activities to encourage the students to indulge in physical activities. Students of different classes participated in it by taking part in different activities like Cycling, flat race, high and long jump race, lemon and spoon race, etc.



During 100m race, time (in sec.) taken by a group of students to finish the race was recorded as follows:

10, 33, 6, 26, 14, 25, 4, 23, 5, 39, 7, 15, 8, 26, 34, 8, 15, 26, 34, 14

Using the given data answer the following questions:

(i) Represent the above data in tabular form using tally marks.

(ii) Find the number of students who took 20 seconds or more to finish the race.

## **SUBJECT: SCIENCE**

**Prescribed book:** Living Science

**By:** A. C. Sahgal, MukulSahgal

### **TERM – I**

#### **COURSE FOR PERIODIC TEST – I**

Chapter 1- Sources of Food

Chapter 2- Components of Food

Chapter 11-Measurement and Motion

#### **COURSE FOR HALF YEARLY EXAMS**

Chapter 3-Fibre to Fabric

Chapter 4- Sorting Materials into Groups

Chapter 6- Changes Around Us

Chapter 7- Living and Non – Living

Chapter 8- Getting to Know Plants

Chapter 12- Light, Shadows and Reflections

**+Chapters of PT-I mentioned below:**

Chapter 1- Sources of Food

Chapter 2- Components of Food

Chapter 11-Measurement and Motion

### **TERM-II**

#### **COURSE FOR PERIODIC TEST – II**

Chapter9- The Body and Its Movements

Chapter13- Electricity and Circuits

Chapter14- Fun with Magnets

Chapter15- Water

Chapter 16- Air Around Us

Chapter17- Garbage In, Garbage Out

## COURSE FOR ANNUAL EXAMS

Chapter 5- Separation of Substances

Chapter 10- Living Organisms and their Surroundings

Chapter 8- Getting to Know Plants (**From Term-I**)

**+Chapters of PT-II mentioned below:**

Chapter 9- The Body and Its Movements

Chapter 13- Electricity and Circuits

Chapter 14- Fun with Magnets

Chapter 15- Water

Chapter 16- Air Around Us

Chapter 17- Garbage In, Garbage Out

### QUESTION PAPER PATTERN FOR PERIODIC TEST-I AND II

Time: 2 hours

M.M: 40

	No. of Ques.	Marks	Total
<b>SECTION A</b>			
One word/one line answer type questions	4	x 1	= 04
<b>SECTION B</b>			
Very short answer type questions	6	x 2	= 12
<b>SECTION C</b>			
Short answer type questions (One figure based question)	3	x 3	= 09
<b>SECTION D</b>			
Long answer type questions	2	x 5	= 10
Case study based question	1	x 5	= 05
		<b>Total =</b>	<b>40</b>

## QUESTION PAPER PATTERN FOR HALF YEARLY AND ANNUAL EXAMS

Time: 3 hours

M.M: 80

	No. of Ques.		Marks		Total
<b>SECTION A</b>					
One word/one line answer type questions	8	x	1	=	08
<b>SECTION B</b>					
Very short answer type questions	9	x	2	=	18
<b>SECTION C</b>					
Short answer type questions (One figure based question)	8	x	3	=	24
<b>SECTION D</b>					
Long answer type questions	3	x	5	=	15
Case study based question	2	x	5	=	10
Labelled Diagram	1	x	5	=	05
			<b>Total=</b>		<b>80</b>

**Diagrams mentioned below will only be asked as per the chapters coming in a particular exam.**

### List of Diagrams:

1. Arrangement of molecules in Solids, Liquids and Gases
2. Parts of a Plant
3. Parts of a Leaf
4. Structure of Flower
5. Solar Eclipse
6. Lunar Eclipse
7. Filtration
8. Distillation
9. Photosynthesis
10. Closed and Open Electric Circuit
11. Water Cycle

**Note:**

1. 30% weightage will be given to self made questions. Figure/Picture based questions and case study based questions will also be self made questions.
2. High Order Thinking Skills (HOTS) will not be asked in exams.
3. Activities mentioned in the Science booklet (provided with the main Science book) will be done in a separate notebook and will carry marks towards portfolio.

For each term a weightage of 2 marks will be for activity notebook and 3 marks weightage will be for Science notebook.

**SUBJECT ENRICHMENT**

**TERM-I**

**Activity:** Prepare the food pyramid on A4 size sheet showing different nutrients from top to bottom. **MM: 20**

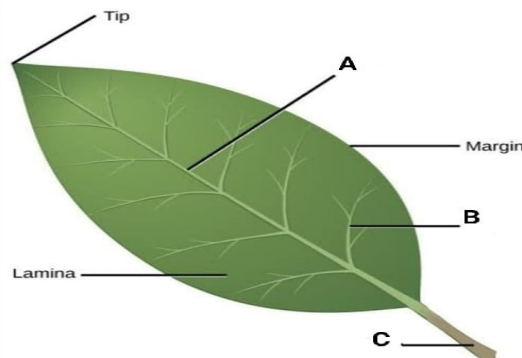
**TERM-II**

**Activity:** Making a working model of an electromagnet. **MM: 20**

**Note:** Other details of the activities will be provided to the students during the classes.

## SAMPLE OF FIGURE BASED QUESTION

**Q. Carefully study the diagram and answer the questions given below.**



- Name the parts of the leaf represented by the letters 'B' and 'C'.
- What is the arrangement of part 'A' of a leaf called?
- Why the leaf is green in colour?

## SAMPLE OF CASE STUDY QUESTION

**Q. Read the given passage and answer the questions.**

Two types of organisms, A and B are found in forests. Both these are cleansing agents of the forest environment. A eats the dead animals in the forest, whereas B breaks down the dead animals into simple substance to be reused by plants for their growth.

- What are organisms like A generally known as?
- Mention an example of an organism like A.
- What are organisms like B generally known as?
- Mention an example of an organism like B.
- Write one role of organism A.

## **SUBJECT – SOCIAL SCIENCE**

### **Prescribed Books:**

- I) NCERT Books
- II) Map Expert (Geography and History) Tarun Publications
- III) Social Science Workbook – cum – Practice material (Rachna Sagar Publications)

### **TERM – I**

#### **Course for Periodic Test – I**

1. What, Where, How and When
2. Understanding Diversity
3. Diversity and Discrimination
4. The Earth in the Solar System
5. Globe: Latitudes and Longitudes
6. Motions of the Earth

#### **Course for Half – Yearly Exams**

1. From Hunting-Gathering to growing food
  2. In the Earliest Cities
  3. What books and burials tell us?
  4. What is Government?
  5. Key Elements of Democratic Government
  6. Maps
  7. Major Domains of the Earth
- + All the Chapters of Periodic Test – I mentioned below**
8. What, Where, How and When
  9. Understanding Diversity
  10. Diversity and Discrimination
  11. The Earth in the Solar System
  12. Globe: Latitudes and Longitudes
  13. Motions of the Earth

## TERM – II

### Course for Periodic Test – II

1. Kingdoms, Kings and an Early Republic
2. New Questions and Ideas
3. Panchayati Raj
4. Rural Administration
5. Urban Administration
6. Major Landforms of the Earth
7. Our Country –India

### Course for Annual Exams

1. Ashoka, the Emperor who gave up War
2. New Empires and Kingdoms
3. Rural Livelihood
4. Urban Livelihood
5. India – Climate, Vegetation and Wildlife

#### + All the Chapters of Periodic Test – II mentioned below

6. Kingdoms, Kings and an Early Republic
7. New Questions and Ideas
8. Panchayati Raj
9. Rural Administration
10. Urban Administration
11. Major Landforms of the Earth
12. Our Country –India
- 13. Globe: Latitudes and Longitudes (Chapter of Term – I)**
- 14. Key Elements of Democratic Government (Chapter of Term – I)**

#### MAP WORK AND DIAGRAMS: -

- All chapter-based maps and diagram of NCERT Book and Workbook – cum – Practice material.
- All the places mentioned in the **Map Expert** (only “Things to do/Mark and Label/ Label the following exercise), below the map will only be asked.

**Pages of Map Expert -**

**Term I- Pages 4 to 31(geog)**

**Pages 50 to 57 (history)**

**Term II- Pages 32 to 49(geog)**

**Pages 58 to 71 (history)**



**QUESTION PAPER PATTERN FOR PERIODIC TEST–I AND PERIODIC TEST–II****Time–2 hours****M.M:40**

	No. of Ques.	Marks
<b>SECTION – A</b>		
1)Q1 to Q5 are of 1 mark each (One word or a sentence, MCQ's, True-False, Fill in the blanks etc.)	5×1=	05
<b>SECTION – B</b>		
2)Q6 to Q10 are of 2 marks each (Very short questions - upto 20 words)	5×2=	10
<b>SECTION – C</b>		
3)Q11 to Q14 are of 3marks each (Short Questions- 40 to 80words)	4×3=	12
<b>SECTION – D</b>		
4) Q15. is of 3 marks (One Case Study)	3×1=	03
<b>SECTION – E</b>		
5) Q16. and Q17. are of 5 marks each (Detailed Questions 80–100words)	2×5=	10

**QUESTION PAPER PATTERN FOR HALF–YEARLY AND ANNUAL EXAMS****Time–3hours****M.M:80****HISTORY**

	No. of Ques	Marks
1) Answer in one word or a sentence	3	× 1= 03
2) Short questions (40–60 words)	3	× 3= 09
3) Case Study (one)	3	× 1 = 03
4) Detailed questions (80–100 words)	2	× 5= 10
5) Map	2	× 1= 02
		<b>Total 27</b>

## GEOGRAPHY

	No. of Ques		Marks	
1) Answer in one word or a sentence	2	×	1 =	02
2) Short questions (40–60 words)	3	×	3 =	09
3) Case Study (one)	3	×	1 =	03
4) Detailed questions(80–100 words)	2	×	5 =	10
5) Map	3	×	1 =	03
			<b>Total</b>	<b>27</b>

## CIVICS

	No. of Ques		Marks	
1) Answer in one word or a sentence	2	×	1 =	02
2) Short questions (40–60 words)	3	×	3 =	09
3) Detailed questions (80–100 words)	3	×	5 =	15
			<b>Total</b>	<b>26</b>

### Section Wise Paper Pattern For Half - Yearly And Annual Examination

<b>Section-A</b> Q1 to Q7 (V. Short/ One word etc.)	1 mark each
<b>Section-B</b> Q8 to Q16 (Short questions)	3 marks each
<b>Section-C</b> Q17 & Q18 (Two Case Studies)	3 marks each
<b>Section-D</b> Q19 to Q25 (Detailed questions)	5 marks each
<b>Section-E</b> Q26 (Map questions- Geography=3marks History=2 marks)	5 mark

### **IMPORTANT NOTE: -**

1. There will be five sections in the question paper that is A, B, C, D, E.
2. In Periodic Test-I and Periodic Test-II 'Section- D' will be case study based whereas in Half-Yearly and Annual Examination 'Section- C' will be case study based.
3. Internal choice can be given in one or two questions of '3' and '5' marks.
4. There will be no self-made. Students have to prepare from workbook and only from "Let's Revise" onwards and back questions of NCERT books.

### **SUBJECT ENRICHMENT**

#### **TERM–**

**MM-20**

1. On the Map of India – mark the Earliest Cities in the Sub continent.  
[10 Marks]
2. Draw a neat and coloured diagram of "Revolution of the Earth" & describe it briefly.  
[10 Marks]

#### **TERM- II**

**MM-20**

1. On the Map of India mark the neighbouring countries, islands and three water bodies that surround India.  
[10 Marks]
2. Make a project on comparative study of any 2 states' culture in terms of foods, clothes, festivals, music & dances etc."

**[10 Marks]**

## **SAMPLE: CASE STUDY**

**[3 Marks]**

The organisms in the biosphere may broadly be divided into the plant kingdom and the animal kingdom. The three domains of the earth interact with each other and affect each other in some way or the other. For example, cutting of forest for fulfilling our needs of wood or clearing land for agriculture may lead to fast removal of soil from slopes. Similarly, earth's surface may be changed due to natural calamities like earthquake. For example, there could be submergence of land, as happened in the case of Tsunami recently parts of Andaman & Nicobar Islands were submerged under water.

Q1. What is the biosphere?

Q2. What are the three domains of the earth?

Q3. What is the removal of soil / upper layer of earth, called?

## **SUBJECT: COMPUTER**

### **Prescribed Book: Let's Click IT**

**By:** Geetanjali Sehgal, Smitha Balakrishnan & Anurag Thakur  
GREEN EARTH PUBLICATIONS (P) LTD.

### **TERM – 1**

#### **Course for Periodic Test – 1**

Chapter 1: More About Computers

Chapter 2: Windows Explorer

Chapter 3: Exploring MS Word 2007

#### **Course for Half – Yearly Exams**

Chapter 1: More About Computers

Chapter 2: Windows Explorer

Chapter 3: Exploring MS Word 2007

Chapter 4: More on MS Word 2007

Chapter 6: Introduction to MS Excel

Chapter 7: Formatting Data in MS Excel

### **TERM – 2**

#### **Course for Periodic Test – 2**

Chapter 8: Formulae in MS Excel

Chapter 12: More on Internet

#### **Course for Annual Exams**

Chapter 8: Formulae in MS Excel

Chapter 12: More on Internet

Chapter 9: Introduction to Coding

Chapter 10: More about Scratch

Chapter 11: Working with Variables in Scratch

## QUESTION PAPER PATTERN

**Time: 2 hrs**

**M.M: 40**

**Section A: Objective Type Questions**

**$16 \times \frac{1}{2} = 8$**

This section consists of 16 questions of  $\frac{1}{2}$  mark each.

Questions can be asked in the following formats:-

<b>Section A: Objective Type Questions</b>	<b>No. of questions</b>	<b>Marks</b>
• Multiple Choice Questions	6	3
• One word	10	5
• Fill in the blanks		
• Match the columns.		
• Full forms (if any)		

**Section B: Short Answer Type Questions**

**$10 \times 2 = 20$**

This section consists of 10 questions of 2 marks each.

**Section C: Long Answer Type Questions**

**$04 \times 3 = 12$**

This section consists of 4 questions of 3 marks each.

**Practical**

**20 marks**

Practical of 20 marks each will be conducted in both the terms separately which will include-

Practical Exam.	Notebook	Viva
10	05	05

**NOTE:**

1. 30% weightage will be given to self-made questions.
2. Practical Assessments given in the book will be taken up during the lab sessions.

## SUBJECT - G.K & REASONING APTITUDE

Time- 2 hrs.

M.M. 25

### Part- A (General Knowledge)

**Prescribed Book :** The Knowledge Generation  
General Knowledge - 6

**Publisher :** Indiannica Learning Private Limited

Term- I

### Course for Periodic Test- I

	Page No.
• All about reptiles	1
• The northeast	2
• Deficiency diseases	3
• Music magic	4
• It runs in the family	5
• Riddles	6
• River banks	7
• Safety First	8-9
• Let us eat organic!	10
• My India	11
• Social media	12
• Languages of the world	13
• Women in sports	14
• Puzzle time	15
• A tour of Asia	16

#### + Extra topics ★

- Countries & Capital
- Famous Books & Authors
- Largest , smallest, highest , longest in India

#### + Current Affairs★

★ Extra topics & Current Affairs will be provided to the students in the class. These will be done in the G.K notebook.

## Course of Half Yearly Examination

	Page No.
• All about space	17
• Global warming	18-19
• Famous works	20
• And the award goes to .....	21
• Famous landmarks	22
• Eco-warriors	23
• News papers	24
• Scientist and their work	25
• How do I measure ?	26
• Highest, tallest, widest	27
• Let us play table tennis	28-29
• On the heritage trail	30-31
• World of microbes	32
• Environmental movements in India	33
• Mixed bag 1	34

### + Chapters of PT-I mentioned below

- Deficiency diseases
- Music Magic
- Safety First
- Let us eat organic!
- My India
- Social media
- Languages of the world
- Women in Sports
- A tour of Asia
- River banks

### + Extra topics ★

(b) First in world

(c) Tech Talk

### + Current Affairs ★

★ Extra topics & Current Affairs will be provided to the students in the class. These will be done in the G.K notebook.



**Term - II**  
**Course for Periodic Test- II**

	<b>Page No.</b>
• Test Paper - 1	35
• Voyages and explorations	36-37
• Dances across the world	38
• Body facts	39
• India at the Olympics	40
• In a series	41
• Public speaking	42-43
• Seats of power	44
• Something Fishy!	45
• Alternative therapies	46-47
• Ancient India	48
• Fun with languages	49
• Based on books	50
• Logical reasoning	51
• World leaders	52

**+ Extra topics ★**

- Countries & currencies
- Largest , smallest , highest , longest in world
- Abbreviations

**+ Current Affairs★**

★ Extra topics & Current Affairs will be provided to the students in the class. These will be done in the G.K notebook.

## Course for Annual Examination

	Page No.
• Hybrid animals	53
• Traditional art and craft	54
• Kitchen science	55
• Autobiographies	56
• Water sports	57
• Medicinal plants	58
• They inspire us	59
• Paint the town	60
• Actors and their debuts	61
• In the desert	62
• Accidental inventions and discoveries	63
• Hyderabad	64-65
• ISRO	66
• Fun with masks!	67
• Mixed bag 2	68
• Test paper 2	69

### + Chapters of PT-II mentioned below

- Dances across the world
- Body facts
- India at the Olympics
- Public speaking
- Seats of Power
- Alternative therapies
- Ancient India
- Fun with languages
- Based on books
- World leaders

### + Extra topics ★

- Branch of study
- Organisations and their Headquarters

### + Current Affairs ★

★ Extra topics & Current Affairs will be provided to the students in the class. These will be done in the G.K notebook.

## **SUBJECT:PART B – REASONING APTITUDE**

**Prescribed Book** : **KNOW YOUR APTITUDE – 6**  
**Author** : **R.Singh, R.S Dhauni, B.B Bhatnagar & S.S Sharma**  
**Published by** : **Goyal Brothers Prakashan**

### **Term-1**

#### **❖ Course for Periodic test– 1**

**15 marks**

##### **Part-A: Verbal Aptitude**

Chapter1. Analogy

Chapter 3. Classification

##### **Part-B: Non Verbal Aptitude**

Chapter 12. Analogy

Chapter 14. Classification

##### **Part-C: Quantitative Aptitude**

Chapter 23. BODMAS Rule

Chapter 24. Fractions and Decimals

#### **❖ Course For Half –Yearly Examination**

**15 marks**

##### **Part-A: Verbal Aptitude**

Chapter 2. Series

Chapter 5. Logical Sequence of Words

Chapter 7. Perceptual Reasoning

Chapter 11. Word Usage

**+ All the chapters of PT-1 mentioned below**

Chapter1. Analogy

Chapter 3. Classification

##### **Part-B: Non Verbal Aptitude**

Chapter 13. Patterns

**+ All the chapters of PT-1 mentioned below**

Chapter 12. Analogy

Chapter 14. Classification

**Part-C: Quantitative Aptitude**

Chapter 20. Numbers

Chapter 21. Quick Multiplication

**+ All the chapters of PT-1 mentioned below**

Chapter 23. BODMAS Rule

Chapter 24. Fractions and Decimals

**Term – 2**

❖ **Course for Periodic Test– 2**

**15marks**

**Part-A: Verbal Aptitude**

Chapter 4. Ranking

Chapter 6. Coding-Decoding

Chapter 8. Blood Relations

Chapter 9. Direction Sense Test

**Part-B: NonVerbal Aptitude**

Chapter 15. Mirror Images

Chapter 16. Water Images

Chapter 17. Cubes/Cuboids

**Part-C: Quantitative Aptitude**

Chapter 19. Ages

Chapter 25. Data Analysis

Chapter 26. Count the Squares

❖ **Course for Annual Examination**

**15 marks**

**Part-A: Verbal Aptitude**

Chapter 1. Analogy (**From Term-1**)

Chapter 10. Venn Diagrams

**+ All the chapters of PT-2 mentioned below**

Chapter 4. Ranking

Chapter 6. Coding-Decoding

Chapter 8. Blood Relations

Chapter 9. Direction Sense Test

**Part-B: Non Verbal Aptitude**

Chapter 13. Patterns ( From Term-1)

Chapter 18. Dice

**+ All the chapters of PT-2 mentioned below**

Chapter 15. Mirror Images

Chapter 16. Water Images

Chapter 17. Cubes/Cuboids

**Part-C: Quantitative Aptitude**

Chapter 22. Mathematical Operations

Chapter 23. BODMAS Rule (From Term-1)

**+ All the chapters of PT-2 mentioned below**

Chapter 19. Ages

Chapter 25. Data Analysis

Chapter 26. Count the Squares

**Paper Pattern and Marking Scheme  
For Periodic Test-1/Periodic Test -2/  
Half Yearly Examination/Annual Examination (2022-2023)**

**Part A – GENERAL KNOWLEDGE**

**M. M. = 25**

- 1.G.K Book 30Qs×1/2 mark=15
  - 2. Extra topics 5Qs×1mark=05
  - 3. Current affairs 10Qs×1/2 mark=05
- Total =25 marks**

**No. of questions=45**

**NOTE:**

- The above question paper will consist of only Multiple Choice Questions, even in the mentioned rubrics, options will be given.
- **ANSWER SHEET WILL BE PROVIDED BY THE SCHOOL IN THE FORM OF OMR SHEET.**

**Questions can be asked in the following ways.**

- One word.
- Fill in the blanks
- Match the pairs
- True /False
- Abbreviations
- Name the terms etc.

**Part B – Reasoning Aptitude**

**M.M. 15**

- 20 questions of  $\frac{1}{2}$ markeach
- 5 questions of 1 mark each

$$20 \times \frac{1}{2} = 10$$

$$5 \times 1 = 05$$

**Total = 15**

**No.of questions= 25**

**NOTE**

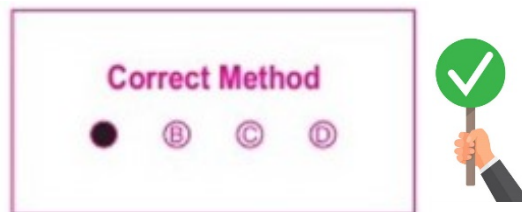
- **THE ENTIRE PAPER OF REASONING APTITUDE WILL BE SELF MADE, KEEPING THE CONCEPT SAME.**
- **Aptitude Tests are for self practice.**
- **ANSWER SHEET WILL BE PROVIDED BY THE SCHOOL IN THE FORM OF OMR SHEET.**

### **General Instructions : -**

1. There will be a combined question paper for General Knowledge and Reasoning Aptitude. Answer sheet will be given by the school in the form of OMR sheet.
2. The maximum marks for the combined paper will be 40 and time duration will be 2 hours.
3. General Knowledge will carry 25 marks and Reasoning Aptitude will carry 15 marks.
4. The entire question paper will consist of Multiple Choice Questions only.
5. Four options (A, B, C, D) will be given in each question
6. All the entries of OMR sheet should be done very carefully. (Kindly refer to the **'IMPORTANT INSTRUCTIONS FOR FILLING OMR SHEET'** mentioned on the next page.)

# IMPORTANT INSTRUCTIONS FOR FILLING OMR SHEET

1. Fill all the entries very carefully.
2. For classes I to IV, use **dark lead pencil only** to fill the bubbles.
3. For classes V to IX, use **Black/Blue ball point pen** only. Any type of cutting/ overwriting/ use of white fluid and pencil/ other pen is strictly prohibited. Non-compliance may lead to declare the OMR Sheet invalid.
4. Bubbles should be filled completely. Multiple fillings are invalid.
5. There is only one correct answer for each question.
6. Mark your answer only in appropriate bubble against the number corresponding to the question.  
For example: To mark the response of question 7, student has to darken the correct bubble in front of serial number 7 in OMR sheet.
7. Do not fold/ mutilate or make any stray marks on OMR Sheet.
8. Do not do any rough work on the OMR sheets. Use the rough sheets provided by the school.
9. Some samples of wrong/ correct ways are shown below:





**10. OMR SHEETS WILL BE SCANNED AND EVALUATED THROUGH A SOFTWARE. HENCE ANY DEVIATION FROM THE INSTRUCTIONS MENTIONED ABOVE WILL LEAD TO NON-EVALUATION OF THE OMR SHEET AUTOMATICALLY.**

विषय- संस्कृत

निर्धारित पुस्तक :- ऋद्धि संस्कृतम् पाठ्यपुस्तकम् (भाग-6)

लेखक :- डॉ. ज्वाला किशोर मिश्र

Term-1

अर्द्धवार्षिक-पूर्व परीक्षा (Periodic Test-1) के लिए निर्धारित पाठ्यक्रम

खंड-क

पाठ

- 1) शब्द परिचय: (संज्ञा)
- 2) अकारान्त पुल्लिंग शब्दाः
- 3) आकारान्त स्त्रीलिंग शब्दाः
- 4) अकारान्त नपुंसकलिंग शब्दाः
- 5) बालकौ हसतः

खंड-ख

व्याकरण

- 1) संस्कृत का प्रारंभिक ज्ञान
- 2) शब्द रूप - बालकः (अकारान्त पुल्लिंग)
- 3) धातु रूप - पठ् (लट् तथा लोट् लकार)
- 4) संख्यावाचक शब्दाः - 1 से 10 (संस्कृत शब्दों में)
- 5) फलों के नाम (संस्कृत में दी गई फलों की तालिका से प्रथम -10)

अर्द्धवार्षिक परीक्षा के लिए निर्धारित पाठ्यक्रम

खंड- क

व्याकरण

- 1) शब्द रूप - तत् (पुल्लिंग)
- 2) धातु रूप - गम् (लट् , लोट् तथा लृट्लकार)

- 3) संख्यावाचक शब्दाः - 11 से 20 तक (संस्कृत शब्दों में)
- 4) अव्ययपदानि (पृष्ठ सं०- 53, 54)
- 5) दीर्घ संधि

**+अर्द्धवार्षिक पूर्व परीक्षा के व्याकरण भाग के निम्नलिखित उपविषय भी पाठ्यक्रम में सम्मिलित किए गए हैं।**

- 6) संस्कृत का प्रारंभिक ज्ञान
- 7) शब्द रूप - बालकः (अकारान्त पुल्लिंग)
- 8) धातु रूप - पठ् (लट् तथा लोट् लकार)
- 9) फलों के नाम (संस्कृत में 1-10) (दी गई फलों की तालिका से प्रथम -10)

**खंड- ख**

**लेखन कार्यम्**

- 1) चित्र पर आधारित वाक्यों को दिए गए शब्दों की सहायता से पूरे करना।

**खंड- ग**

**पाठ**

- 1) सर्वनाम परिचयः
- 2) ईश्वरः सर्वत्र वसति
- 3) कर्ता कारक (प्रथमा विभक्तिः)
- 4) कर्म कारक (द्वितीया विभक्तिः)

**+ अर्द्धवार्षिकपूर्व परीक्षा के निम्नलिखित पाठ भी पाठ्यक्रम में सम्मिलित किए गए हैं।**

- 5) शब्द परिचयः (संज्ञा)
- 6) अकारान्त पुल्लिंग शब्दाः
- 7) आकारान्त स्त्रीलिंग शब्दाः
- 8) अकारान्त नपुंसकलिंग शब्दाः
- 9) बालकौ हसतः

## Term - 2

### वार्षिक पूर्व परीक्षा (Periodic Test- 2) का पाठ्यक्रम

#### खंड-क

##### व्याकरण

- 1) शब्द रूप - लता (आकारान्त स्त्रीलिंग)
- 2) धातु रूप - कृ (लट् , लृट् , लोट् तथा लङ्लकार)
- 3) संख्यावाचक शब्दाः -21 से 30 तक (संस्कृत शब्दों में)
- 4) गुण संधि
- 5) फलों के नाम (संस्कृत में दी गई फलों की तालिका से प्रथम -15)

#### खंड-ख

##### लेखन कार्यम्

- 1) चित्र पर आधारित वाक्यों को दिए गए शब्दों की सहायता से पूरे करना।

#### खंड-ग

##### पाठ

- 1) करण कारक (तृतीया विभक्तिः)
- 2) संप्रदान कारक (चतुर्थी विभक्तिः)
- 3) अपादान कारक (पंचमी विभक्तिः)
- 4) संबंध कारक (षष्ठी विभक्तिः)

### वार्षिक परीक्षा के लिए पाठ्यक्रम

#### खंड-क

##### व्याकरण

- 1) शब्द रूप - किम् (अकारान्त नपुंसकलिंग)
- 2) धातु रूप - अस् (लट्, लृट्, लोट् तथा लङ्लकार)
- 3) फलों के नाम (संस्कृत में दी गई फलों की तालिका से 1-20)

+अर्द्धवार्षिक पूर्व, अर्द्धवार्षिक एवं वार्षिक पूर्व परीक्षा के व्याकरण भाग के निम्नलिखित उपविषय भी पाठ्यक्रम में सम्मिलित किए गए हैं।

- 4) संस्कृत का प्रारंभिक ज्ञान
- 5) शब्द रूप - बालकः (अकारान्त पुल्लिंग), तत् (पुल्लिंग), लता (आकारान्त स्त्रीलिंग)
- 6) धातु रूप - पठ् (लट् तथा लोट् लकार), गम् (लट् , लृट् तथा लोट् लकार) कृ (लट् , लृट् , लोट् तथा लङ्लकार)
- 7) संख्यावाचक शब्दाः - 1 से 30 (संस्कृत शब्दों में)
- 8) अव्ययपदानि (पृष्ठ सं०- 53, 54)
- 9) दीर्घ संधि, गुण संधि

### खंड-ख

#### लेखन कार्यम्-

- 1) चित्र पर आधारित वाक्यों को दिए गए शब्दों की सहायता से पूरा करना।

### खंड-ग

#### पाठ

- 1) अधिकरण कारक
- 2) संबोधन
- 3) कंठस्थ श्लोक- (हिन्दी अनुवाद सहित ऋद्धि संस्कृतम् पृष्ठ सं०- 69, 75, 86, 90, 94 व 98 से कराया जाएगा।

+वार्षिक पूर्व परीक्षा के निम्नलिखित पाठ भी पाठ्यक्रम में सम्मिलित किए गए हैं।

- 4) करण कारक (तृतीया विभक्तिः)
- 5) संप्रदान कारक (चतुर्थी विभक्तिः)
- 6) अपादान कारक (पंचमी विभक्तिः)
- 7) संबंध कारक (षष्ठी विभक्तिः)

## विशेष -

- पाठों के अंत में दिए गए अभ्यास कार्य से हिन्दी से संस्कृत में अनुवाद कक्षा कार्य तथा परीक्षा में नहीं दिया जाएगा।

## फलों के नाम के लिए निम्नलिखित तालिका देखें -

	हिन्दी नाम	संस्कृत नाम		हिन्दी नाम	संस्कृत नाम		हिन्दी नाम	संस्कृत नाम
1	बेर	कर्कन्धुः	8	शरीफा	सीताफलम्	15	आम	आम्रम्
2	केला	कदलीफलम्	9	नारियल	नारिकेलः	16	नारंगी	नारंगम्
3	अखरोट	अक्षोटम्	10	अंजीर	अञ्जीरम्	17	किशमिश	शुष्कद्राक्षा
4	खजूर	खर्जुरम्	11	पिशता	अकोलम्	18	बादाम	वातादम्
5	बेल का फल	बिल्वम्	12	जामुन	जम्बूः	19	नींबू	जम्बीरम्
6	खरबूजा	खर्बूजम्	13	तरबूज	कालिन्दम्	20	नाश पाती	अमृतफलम्
7	सेब	सेवम्	14	अंगूर	द्राक्षाफलम्			

## अर्द्धवार्षिक पूर्व परीक्षा के प्रश्नपत्र का प्रारूप

समय - 2 घण्टे

पूर्णांक- 40

प्रश्नों की संख्या x अंक

### खण्ड- क

#### व्याकरण

20 अंक

- 1) संस्कृत का प्रारंभिक ज्ञान (बहुविकल्पीय)  $4 \times 1 = 4$
- 2) शब्दरूप  $6 \times \frac{1}{2} = 3$
- 3) धातु रूप  $6 \times \frac{1}{2} = 3$
- 4) संख्यावाचक शब्दाः  $5 \times 1 = 5$
- 5) फलों के नाम (1 से 10)  $5 \times 1 = 5$

**खण्ड- ख**

**साहित्य**

**20 अंक**

- |                                   |           |
|-----------------------------------|-----------|
| 6) शब्दार्थ                       | 5 x 1 = 5 |
| 7) गद्यांश का हिन्दी अनुवाद       | 5         |
| 8) रिक्त स्थान (दिए गए शब्दों से) | 5 x 1 = 5 |
| 9) उचित मेलनम्                    | 5 x 1 = 5 |

**अर्द्धवार्षिक परीक्षा के प्रश्नपत्र का प्रारूप**

**समय - 2 घण्टे**

**पूर्णांक- 40**

**प्रश्नों की संख्या x अंक**

**खण्ड- क**

**व्याकरण**

**14 अंक**

- |  |                       |
|--|-----------------------|
| 1) संस्कृत का प्रारंभिकज्ञान           | 2 x 1 = 2             |
| 2) अव्ययपदानि (बहुविकल्पीय)            | 2 x 1 = 2             |
| 3) शब्द रूप                            | 4 x $\frac{1}{2}$ = 2 |
| 4) धातु रूप                            | 4 x $\frac{1}{2}$ = 2 |
| 5) संधि                                | 4 x $\frac{1}{2}$ = 2 |
| 6) संख्यावाचक शब्दाः                   | 2 x 1 = 2             |
| 7) फलों के नाम (संस्कृत में - 1 से 10) | 2 x 1 = 2             |

**खण्ड- ख**

**लेखन कार्यम्**

**4 अंक**

- 8) चित्र पर आधारित वाक्यों को दिए गए शब्दों की सहायता से पूरा करना।  
(लेखन कार्य में पूछे जाने वाले विषय पाठ्य पुस्तक से न लिए जाएँ।)

**खण्ड- ग****साहित्य****22 अंक**

9) पठित गद्यांश पर आधारित प्रश्नोत्तर

बहुविकल्पीय	2 x 1 = 2	}
व्याख्यात्मक	2 x 1 = 2	

10) शब्दार्थ

3 x 1 = 3

11) वाक्य शुद्ध करके पुनः लिखना

3 x 1 = 3

12) गद्यांश का हिन्दी अनुवाद

4

13) रिक्त स्थान (दिए गए शब्दों से भरना)

4 x 1 = 4

14) सही मिलान करना

4 x 1 = 4

**वार्षिक पूर्व परीक्षा के प्रश्नपत्र का प्रारूप****समय - 2 घण्टे****पूर्णांक- 40****प्रश्नों की संख्या x अंक****खण्ड- क****व्याकरण****16 अंक**

1) शब्दरूप

 $6 \times \frac{1}{2} = 3$ 

2) धातु रूप

 $6 \times \frac{1}{2} = 3$ 

3) संख्यावाचक शब्दाः

3 x 1 = 3

4) संधि

3 x 1 = 3

5) फलों के नाम (संस्कृत में- 1 से 15) (बहुविकल्पीय)

4 x 1 = 4

**खण्ड- ख****लेखन कार्यम्****4 अंक**

6) चित्र पर आधारित वाक्यों को दिए गए शब्दों की सहायता से पूरा करना।

(लेखन कार्य में पूछे जाने वाले विषय पाठ्य पुस्तक से न लिए जाएँ।)



**खण्ड- ग****साहित्य****20 अंक**

- |                                   |           |
|-----------------------------------|-----------|
| 7) शब्दार्थ                       | 5 x 1 = 5 |
| 8) रिक्त स्थान (दिए गए शब्दों से) | 5 x 1 = 5 |
| 9) गद्यांश का हिन्दी अनुवाद       | 6         |
| 10) उचित मेलनम्                   | 4 x 1 = 4 |

**वार्षिक परीक्षा के प्रश्नपत्र का प्रारूप****समय - 2 घण्टे****पूर्णांक- 40****प्रश्नों की संख्या x अंक****खण्ड- क****व्याकरण****14 अंक**

- |   |                       |
|---|-----------------------|
| 1) संस्कृत का प्रारंभिक ज्ञान (बहुविकल्पीय) | 2 x 1 = 2             |
| 2) शब्द रूप                                 | 4 x $\frac{1}{2}$ = 2 |
| 3) धातु रूप                                 | 4 x $\frac{1}{2}$ = 2 |
| 4) अव्ययपदानि                               | 4 x $\frac{1}{2}$ = 2 |
| 5) संधि                                     | 4 x $\frac{1}{2}$ = 2 |
| 6) संख्यावाचक शब्दाः                        | 2 x 1 = 2             |
| 7) फलों के नाम (संस्कृत में- 1 से 20)       | 2 x 1 = 2             |

**खण्ड- ख****लेखन कार्यम्****4 अंक**

- 8) चित्र पर आधारित वाक्यों को दिए गए शब्दों की सहायता से पूरा करना।  
(लेखन कार्य में पूछे जाने वाले विषय पाठ्य पुस्तक से न लिए जाएँ।)

खण्ड- ग

साहित्य

22 अंक

9) पठित गद्यांश पर आधारित प्रश्नोत्तर

बहुविकल्पीय  $2 \times 1 = 2$  }  
व्याख्यात्मक  $2 \times 1 = 2$  }

10) शब्दार्थ  $3 \times 1 = 3$

11) सही मिलान करना/वाक्य शुद्ध करके पुनः लिखना  $3 \times 1 = 3$

12) गद्यांश का हिन्दी अनुवाद 4

13) रिक्त स्थान (दिए गए शब्दों से भरना)  $4 \times 1 = 4$

14) कंठस्थ श्लोक लिखकर उसका हिंदी में अनुवाद करना 4

**SUBJECT – ART**

Prescribed Book- Art Expert

By – Sakshi Goel

**Term-1****Course for Periodic Test -I****Colouring Work**

1. Tulip
2. Landscape

**Shading Work**

3. Face Expressions ( Any three)
4. Play ground scene
5. Any five leaves

**Course for Half-Yearly Examination****Colouring Work**

1. Design in circle
2. Fruit Basket

**Shading Work**

3. Duck
  4. Cup Plate
- + All topics of Periodic Test – 1

**Term-II****Course for Periodic Test -II****Colouring Work**

1. Indian style warli Painting
2. Any tree

**Shading Work**

3. Thermos
4. Book
5. Parts of face( Nose, Eye, Lips and Ear)

## Course for Annual Examination

### Colouring Work

1. Poster Making
2. Pot Marigold Flower

### Shading Work

3. Any five vegetables
4. Snake Charmer

**+ All the topics of Periodic Test- 2**

### Question paper pattern for Periodic Test-1 and Periodic Test-2

**Time–1:30 hrs.**

**M.M.-20**

Q. Draw and shade in any one of the given topics

#### Note-

1. Choice of only 1 topic will be given in the exams.
2. Colouring topics can be given for shading work as well.

### Question paper pattern for Half yearly and Annual Exams

**Time- 3 hrs**

**M.M.40**

**Attempt one question from colouring and one from shading.**

Q1. Draw any one topic and colour it.

25 marks

Q2. Draw any one topic and shade it.

15 marks

#### Note :

1. Drawing file will have a weightage of 10 marks in each term.
2. Shading and colouring both skills will be accessed in Half Yearly and Annual exams.
3. Choice of only 1 topic each for shading and colouring will be given in the exams.
4. Syllabus of Half Yearly Exams will not be included in Annual Exams.